



ETFE

COVER BODY AND ROOF MATERIAL

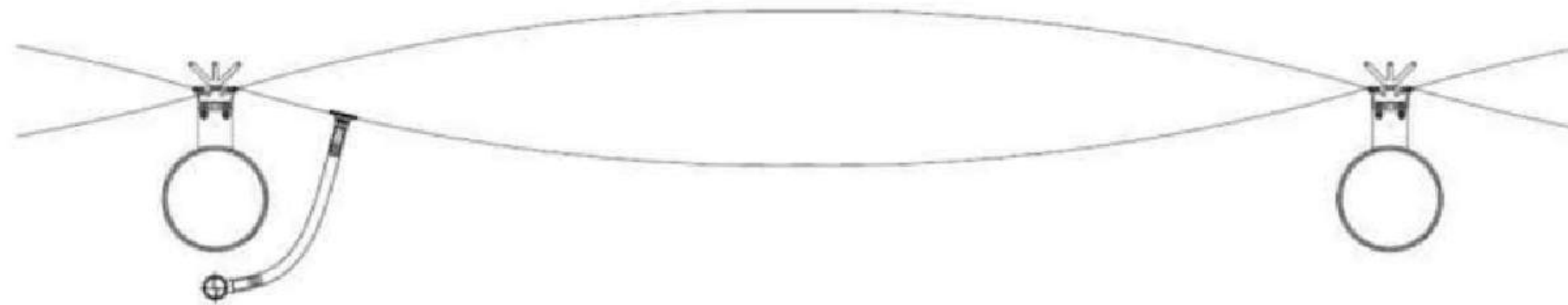
INSTALLATION GUIDE

WWW.KNCFACADE.COM



HOW IT WORKS

Air cushions are inflated with air, usually at low pressure, to provide insulation and to resist wind loads.



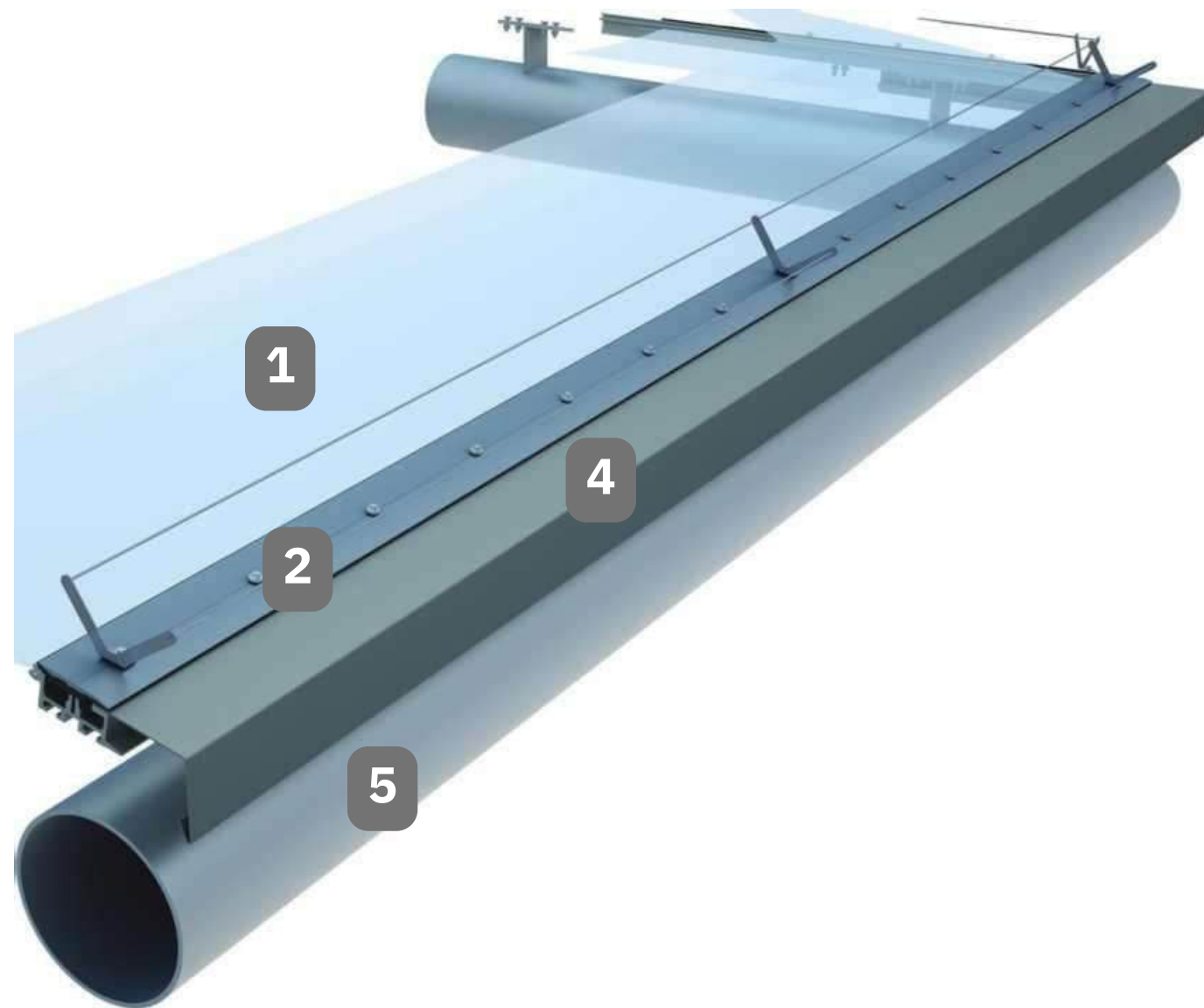
1. ETFE

2. Aluminum frame

3. Air blowing system

4. Surface flashing effect material

5. Main support structure



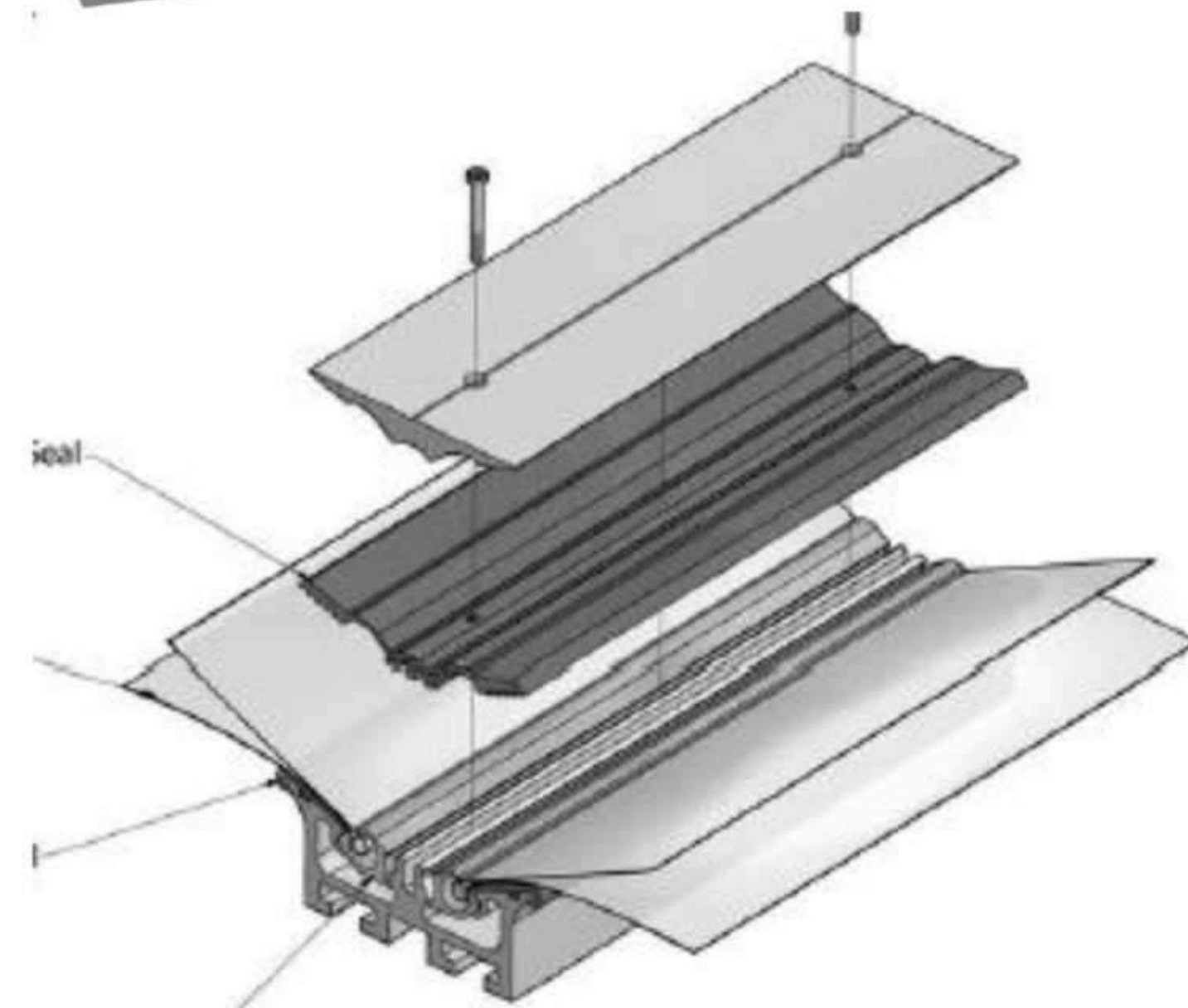
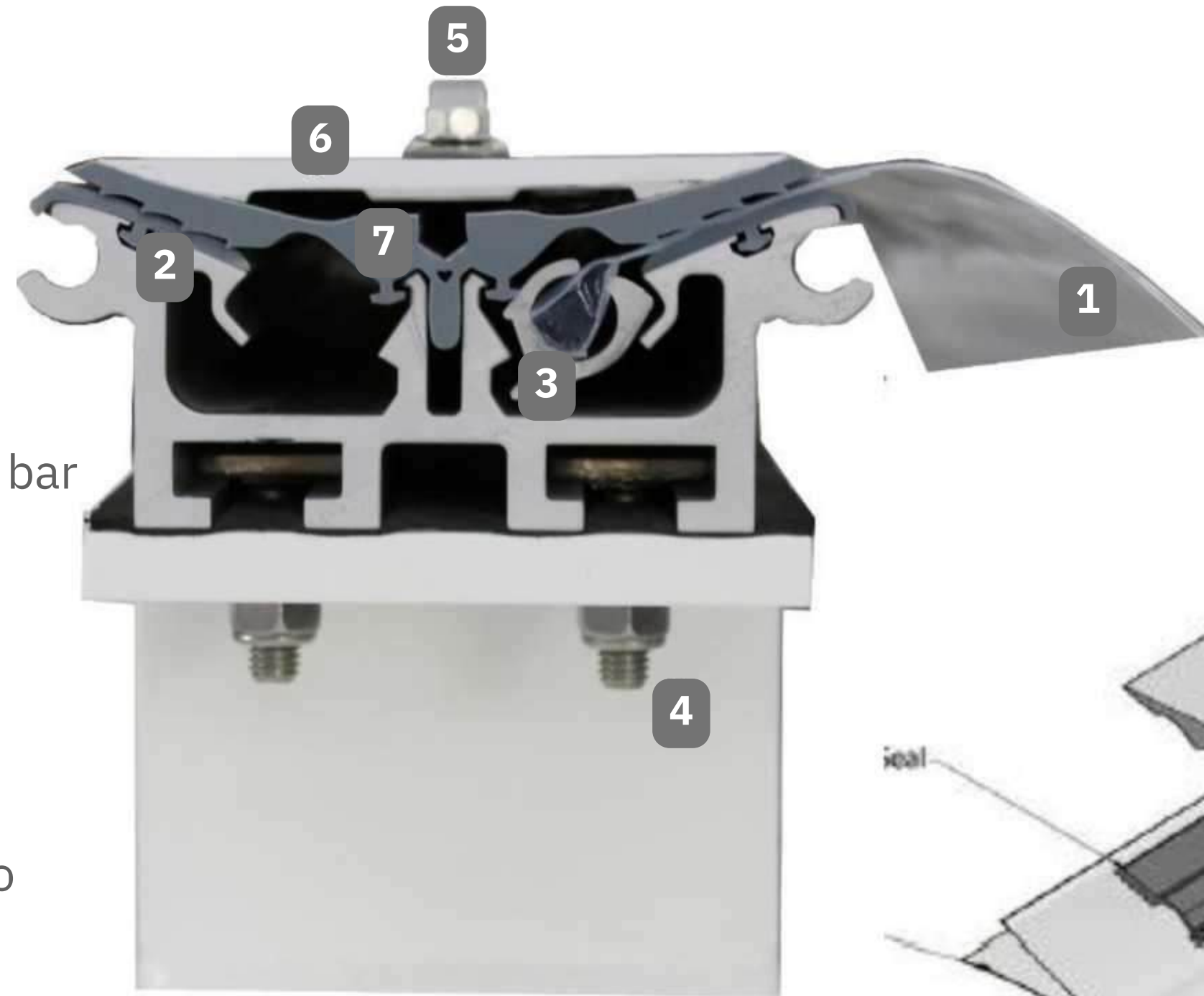
ABOVE



BELOW

ALUMINUM FRAME STRUCTURE AND CONNECTION MATERIALS

1. ETFE
2. Silicone adhesive
3. Keder clamp hidden in aluminum bar
4. Bolt - Connection material
5. Cap bolt
6. Load-bearing cap bolt
7. Add a layer of silicone adhesive to the surface



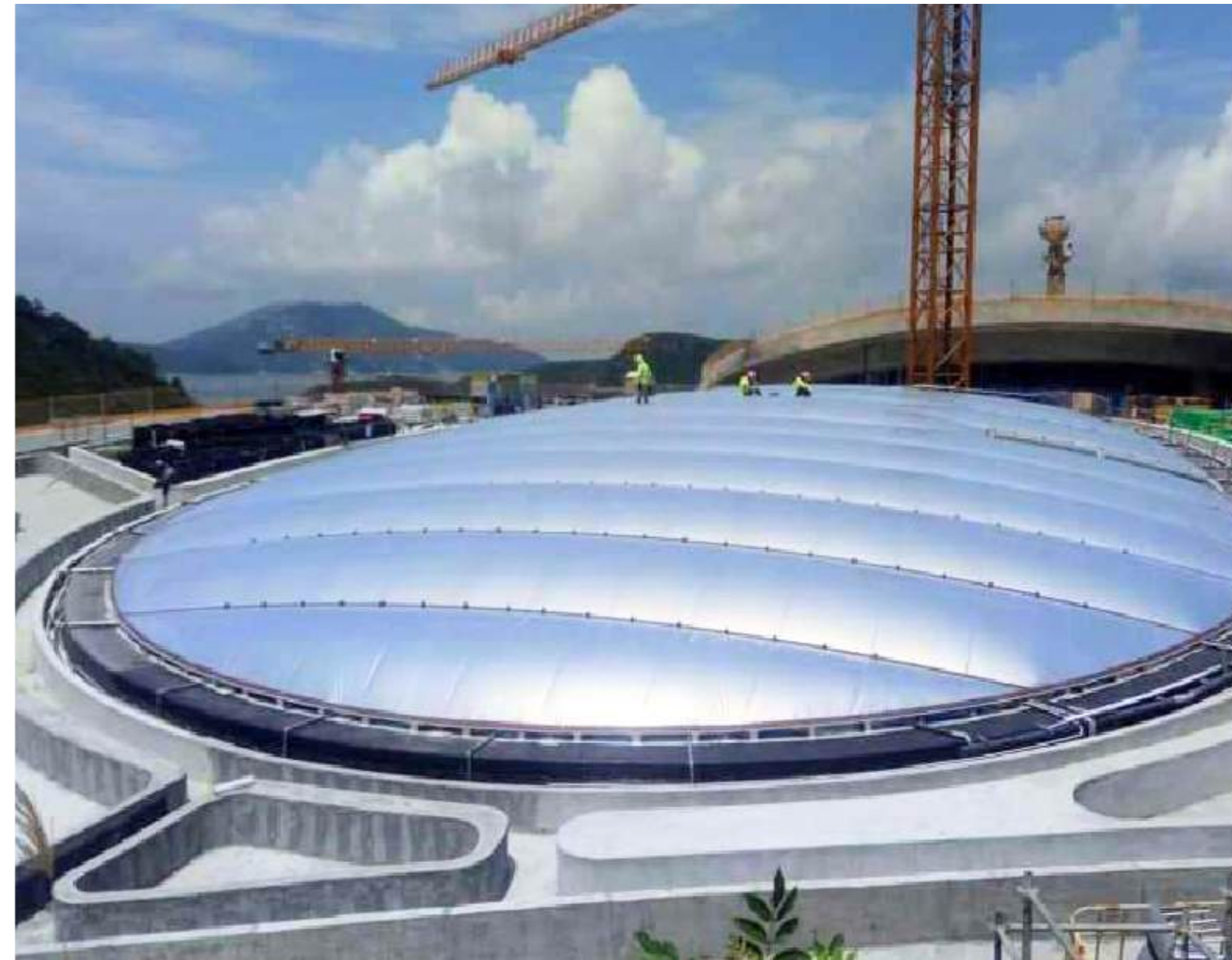
AUTO AIR SUPPLY UNITS



**IMAGE OF
STRUCTURAL
SYSTEM
CONSTRUCTION**



PROJECT IMPLEMENTATION IN HONG KONG





WWW.KNCFACADE.COM